

Go sightseeing in Amanohashidate・Ine with this pass!

You can go to the hot spot "Ine" !

Kyoto by the sea Surprising! Good deal and useful

# Amanohashidate・Ine

Unlimited ride!!

Hop On Hop Off

## Pass

Visit boat houses of Ine, the nearest town to sea in Japan.

### 1-Day Pass

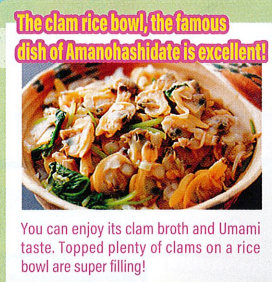
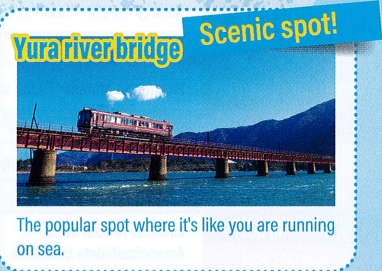
Adult **¥3,500**  
Child **¥1,750**

### 2-Day Pass

Adult **¥4,500**  
Child **¥2,250**



**Route bus**  
Miyazu station~Amanohashidate station~Amanohashidate cable-shita~Inewan-meguri hide~Ine (Stopover is permitted)  
\*Except highway bus・community bus.



Ticket Sales Locations

**Staffed 15 stations of Tantetsu**  
(Fukuchiyama, Oe, Nishimaizuru, Miyazu, Tango Yura, Kunda, Amanohashidate, Yosano, Kyotango Omiya, Mineyama, Amino, Yuhigaura Kizu-onsen, Shotenkyo, Kumihama, Toyouka)  
Tantetsu Kairiku Kotsu : Miyazu information center・Passenger ship service office (Amanohashidate)  
Kyoto by the Sea DMO Tour Center (at Kyotango city Omiya government office)  
\*Kyoto by the Sea Amanohashidate・Ine pass is not available for purchase online.

京都丹後鉄道  
WILLER TRAINS  
**0772-25-2323**

Weekday 9:00 ~ 18:00

阪急阪神東宝グループ  
丹後海陸交通株式会社  
**0772-42-0321**

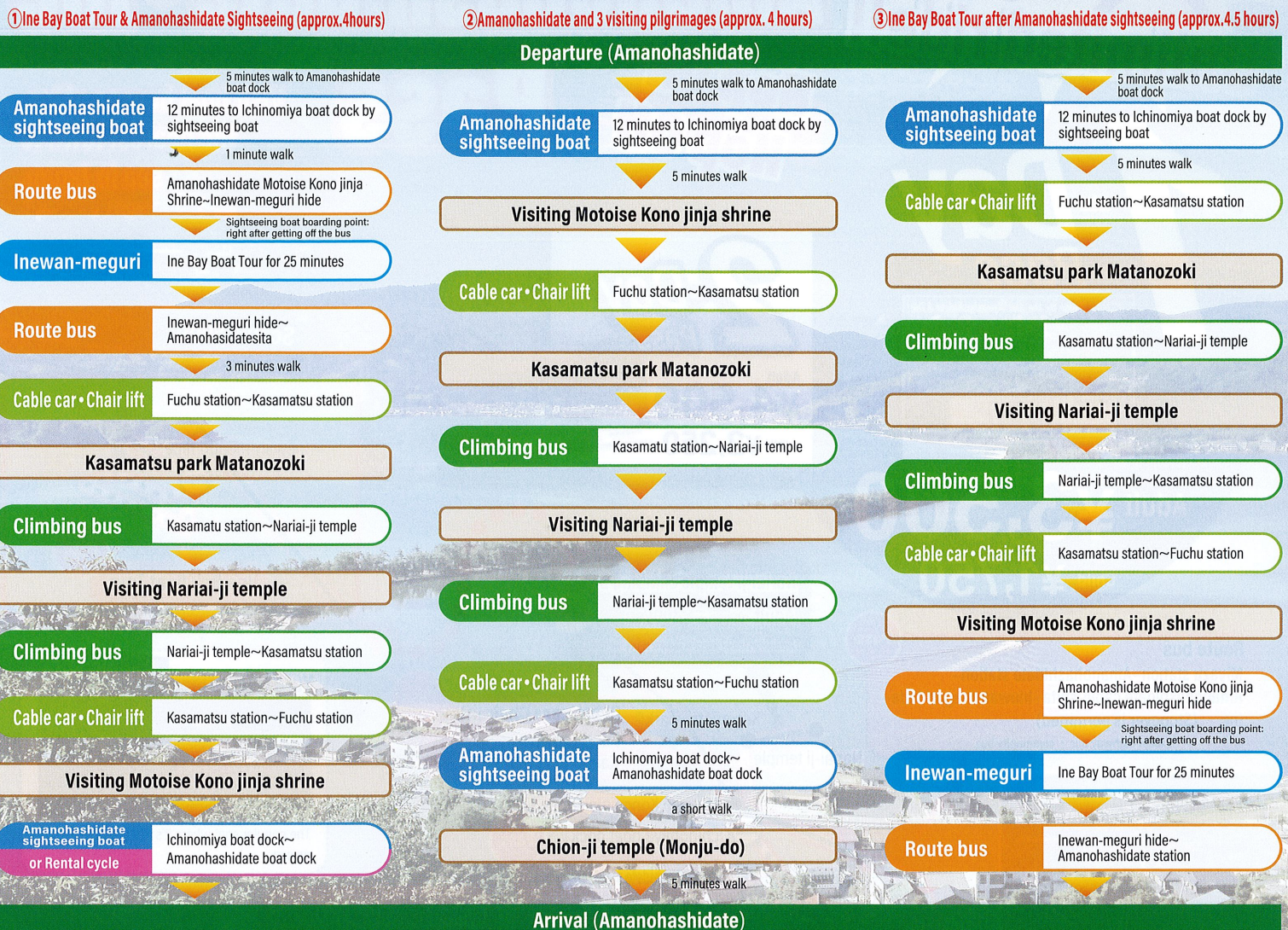


Reasonable and convenient!  
For those who has such a plan:

# Take your time for sightseeing in Amanohashidate, and go to the scenic spot!

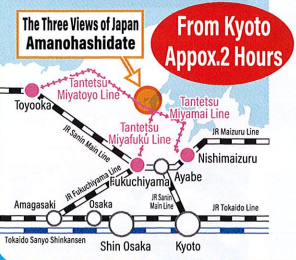
**1-Day Pass** ¥3,500 (Child ¥1,750) **Recommendable course** **2-Day Pass** ¥4,500 (Child ¥2,250)

From each area such as Nishimaizuru, Toyooka, Fukuchiyama



For each area such as Nishimaizuru, Toyooka and Fukuchiyama

## Access train to Amanohashidate



**From Fukuchiyama station**

Dep't. from Fukuchiyama station at 10:06

「Limited express Tango AO-MATSU train 1」

Tango AO-MATSU is available only with Amanohashidate • Ine Pass. (Basic fare ticket)

**From Nishimaizuru station**

Dep't. from Nishimaizuru station at 10:29

「Tango AKA-MATSU train 1」

A boarding ticket (540yen) is required to get on AKA-MATSU in addition to a basic fare ticket. Non-reserved seat. Take a seat you like after boarding.

**From Toyooka station**

Dep't. from Toyooka station at 08:51

「Rapid for Kumihama (By Limited express Hashidate 2 from Kumihama)」

Non-reserved seats of limited express train standard cars are available with Amanohashidate • Ine Pass.

Must-see spots you should not miss

